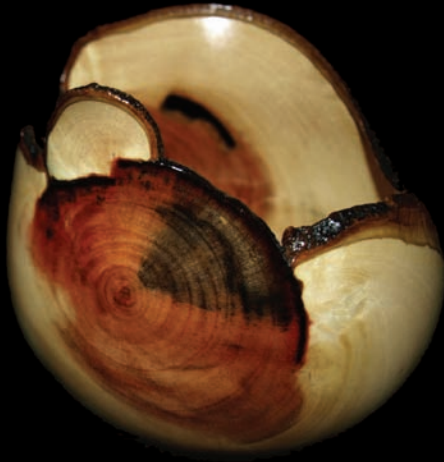


Steve LeBlanc

Woodturning Artist



Steve LeBlanc creates his bowls and sculpture in his studio in Simi Valley, California. He is a self taught wood turner who values the freedom from strict form. Steve's turnings incorporate a combination of sophisticated, traditional shapes with a contemporary flair, incorporating natural edges and bark inclusions whenever the piece allows.

His meticulous craftsmanship is infused with a sense of freedom and spontaneity drawn from his work with the aerospace industry and love of music. It takes stamina for a tree to grow and Steve's sensitive touch reflects his appreciation of the secret beauty of each piece. Steve's works are found in private and corporate collections across the United States.



2829 Thicket Place | Simi Valley, CA
sml.woodturner@att.net | 805 813 4985

